

FSE 025B2001

Glass fiber optic cable

Article number: 10258994

Overview

- Through-beam type
- Actual range up to 140 mm
- Cylindrical smooth sensing head $\varnothing 3$ mm
- Plastic jacket 25 cm long
- Operating temperature up to +70 °C
- For rugged fiber optic sensors FVDM 15

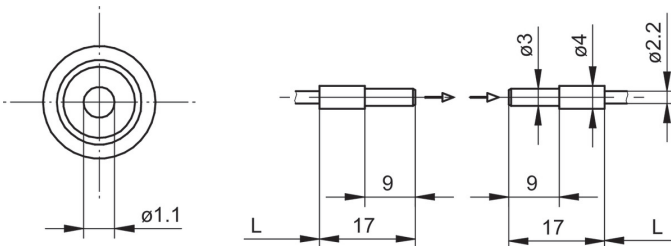


Picture similar

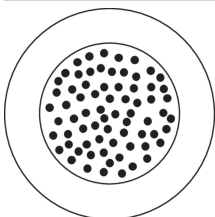
Technical data

General data		Mechanical data	
Particular characteristics	Smooth sensing head	Width / diameter (head)	3 mm
Operating principle	Through-beam type	Height / length (head)	17 mm
Actual range Sb	140 mm	Material (head)	Aluminum
Fiber optic head	Cylindrical smooth	Bending radius (fixed)	7.5 mm
Operating temperature	-25 ... +70 °C	Bending radius (mobile)	15 mm
Exit angle	60°	Cable jacket diameter	2.5 mm
Fiber optics can be shortened to length	No	Material cable jacket	PVC
Integrated lens	No	Fiber cross section	1 mm ²
Adaptable lens	No	Material (fiber optic cable)	Glass
Infrared light compatibility (1450 nm)	Yes	Length (fiber optic cable)	25 cm

Dimension drawing



Fiber arrangement



Accessories

Fitting fiber optic sensors

10234639	FVDM 15N5103
10122368	FVDM 15N5103/S14
10234520	FVDM 15P5103
10239451	FVDM 15P5103/S14
10234519	FVDM 15P5130
10124952	FVDM 15P5130/S14

Mounting accessories

10103230	Replacement cap nut for fiber optics series 15
----------	--