

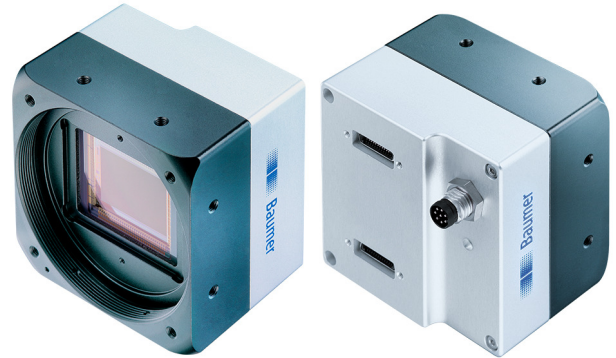
LXC-500M

Camera Link®, 48 Megapixel, Monochrome

Article number: 11188975

Overview

- 7920 × 6004 px
- ams (CMOSIS) CMV50000
- 35 mm CMOS
- 15 fps
- Camera Link® Full



Picture similar



GEN*i*CAM



Technical data

Sensor information

| | |
|---------------|-----------------------|
| Sensor | ams (CMOSIS) CMV50000 |
| Mono/Color | Mono |
| Sensor type | 35 mm CMOS |
| Shutter type | Global shutter |
| Resolution | 7920 × 6004 px |
| Pixel size | 4.6 × 4.6 µm |
| Exposure time | 0.1 ... 1000 ms |

Data quality (EMVA 1288 typical)

| | |
|-----------------------|-----------------|
| Dark noise | 8.46 e- |
| Saturation capacity | 12667 e- |
| Dynamic range | 62.9 dB |
| Signal-to-noise ratio | 41 dB |
| Quantum efficiency | 57.3 % @ 536 nm |

Acquisition formats

| | |
|--|---|
| Image formats, interface frame rate max. | Full Frame, 7920 × 6004 px, max. 15 fps Binning 2×2, 3960 × 3002 px, max. 15 fps Binning 1×2, 7920 × 3002 px, max. 15 fps Binning 2×1, 3960 × 6004 px, max. 15 fps |
| Pixel formats | Mono8 Mono12 |

Image preprocessing

| | |
|-----------------|---|
| Analog controls | Gain (0 ... 18 dB) Offset (0 ... 255 LSB 12 Bit) |
| Color models | Mono |

Camera features

| | |
|-----------------------|---|
| Synchronization | free running trigger |
| Trigger sources | Hardware Software ActionCommand |
| Trigger delay | 0 ... 2 sec, tracking and buffering of up to 256 trigger signals |
| Sequencer | Automated control for series of images using different sets of parameters |
| Sequencer parameter | Exposure time gain factor Output ROI Offset x ROI Offset y |
| Digital inputs | 1 input line |
| Digital outputs | 1 output line |
| Internal image buffer | 512 MB |

Interfaces and connectors

| | |
|-------------------|---|
| Data interface | Camera Link Full, connector: 2 x Standard SDR26 (Mini CL) |
| Process interface | M8 / 8 pins |
| Power supply | via M8 / 8 pins |

Mechanical data

| | |
|------------|---|
| Lens mount | M58-mount (F-mount, M42, C-mount via adapter) |
| Width | 60 mm |
| Height | 60 mm |

LXC-500M

Camera Link®, 48 Megapixel, Monochrome

Article number: 11188975

Technical data

Mechanical data

| | |
|----------|---------------------|
| Depth | 43.05 mm |
| Weight | ≤ 235 g (M58-mount) |
| Material | housing: aluminum |

Electrical data

| | |
|--------------------------|--|
| Voltage supply range +Vs | 12 ... 24 V DC (external power supply) 38 ... 57 V (PoCL) |
| Power consumption | Approx. 10 W @ 24 VDC (sequential readout) Approx. 12 W @ 12 VDC (PoCL) |

Non-volatile memory

| | |
|-------------------|--------|
| Flash memory size | 128 kB |
|-------------------|--------|

Environmental conditions

| | |
|-----------------------|---------------------------------------|
| Operating temperature | +5 ... +66 °C @ T = measurement point |
| Humidity | 10 ... 90 % (non-condensing) |

| | |
|------------------|-------|
| Protection class | IP 40 |
|------------------|-------|

Conformity

| | |
|------------|-------------------|
| Conformity | CE RoHS EAC |
|------------|-------------------|

Dimension drawing

