

# Totalizers mechanic

## Revolution counter

Display 5 digits, manual reset (zero) by lever

### U 411



U 411 - Revolution counter

#### Features

- Revolution counters
- Adding
- Display 5-digits
- Drive shaft at bottom
- Reset by lever

#### Technical data - mechanical design

Function	Revolution counter
Display	White numbers on black
Number of digits	5-digits
Digit height	7 mm
Zero setting	Manual by reset lever. Do not let snap or make jerky movements.
Count mode	Adding in a rotational direction to be indicated, subtracting in reverse direction. 1 rev. = 1 count
Drive shaft	Centered below, $\varnothing 7$ mm
Operating speed	$\leq 1000$ rpm
Measuring range	99 999
Ambient temperature	0...+60 °C
Housing type	Surface mount housing with mounting plate
Housing colour	Grey
Dimensions W x H x L	106 x 64 x 45 mm
Dimensions mounting plate	120 x 64 mm
Mounting type	Base plate, 4 long mounting holes
Weight approx.	380 g
Materials	Housing: Hostaform POM, grey Base plate: steel zinc-coated

# Totalizers mechanic

## Revolution counter

### Display 5 digits, manual reset (zero) by lever

U 411

#### Part number

U 411. 010 A 01

Display / direction of rotation

A 5 digits 99 999 / I

B 5 digits 99 999 / II

Count mode / drive

01 1 revolution = 1 digit / drive shaft at bottom

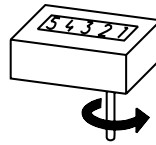
Housing

A Surface mount housing, grey

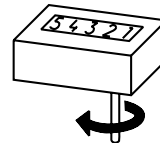
Zero setting

010 With reset lever

#### Direction of strokes and rotation



Direction of rotation I



Direction of rotation II

#### Dimensions

