

# Totalizers mechanic

## Meter counter

Display 5 digits, manual reset (zero) by lever

### M 411



M 411 - Meter counter

#### Features

- Meter counter
- Adding
- Display 5-digits
- Drive shaft at bottom
- Reset by lever

#### Technical data - mechanical design

Function	Meter counter
Display	White numbers on black Decimal digits in red
Number of digits	5-digits
Digit height	7 mm
Zero setting	Manual by reset lever. Do not let snap or make jerky movements.
Count mode	Adding in a rotational direction to be indicated, subtracting in reverse direction. See part number key
Drive shaft	Centered below, $\varnothing 7$ mm
Measuring speed	<60 m/min
Measuring accuracy	1 dm
Measuring range	9999.9 m
Ambient temperature	0...+60 °C
Housing type	Surface mount housing with mounting plate
Housing colour	Grey
Dimensions W x H x L	106 x 64 x 45 mm
Dimensions mounting plate	120 x 64 mm
Mounting type	Base plate, 4 long mounting holes
Weight approx.	380 g
Materials	Housing: Hostaform POM, grey Base plate: steel zinc-coated

# Totalizers mechanic

Meter counter

Display 5 digits, manual reset (zero) by lever

M 411

## Part number

M 411. 010 A 03

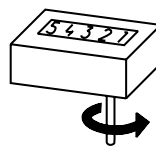
010 Zero setting  
 With reset lever  
 A Housing  
 Surface mount housing, grey  
 03 Count mode / drive  
 2 revolutions = 10 digits  
 = 1.0 m / drive shaft at bottom  
 C Display / direction of rotation  
 5 digits 9999.9 / I  
 D 5 digits 9999.9 / II

## Accessories

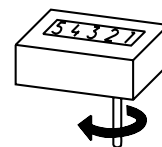
### Measuring wheels

MR211.07A	Circumf. 20 cm, knurled aluminium
MR241.07D	Circumf. 20 cm, smooth Hytrel TPE-E
MR261.07A	Circumf. 20 cm, knopped rubber NBR Nitril
MR291.07D	Circumf. 20 cm, grooved Hytrel TPE-E
MR592.07D	Circumf. 50 cm, grooved Hytrel TPE-E
MR512.07A	Circumf. 50 cm, knurled aluminium
MR542.07D	Circumf. 50 cm, smooth Hytrel TPE-E
MR552.07A	Circumf. 50 cm, smooth Vulkollan PUR
MR562.07A	Circumf. 50 cm, knopped rubber NBR Nitril

### Direction of strokes and rotation



Direction of rotation I



Direction of rotation II

## Dimensions

