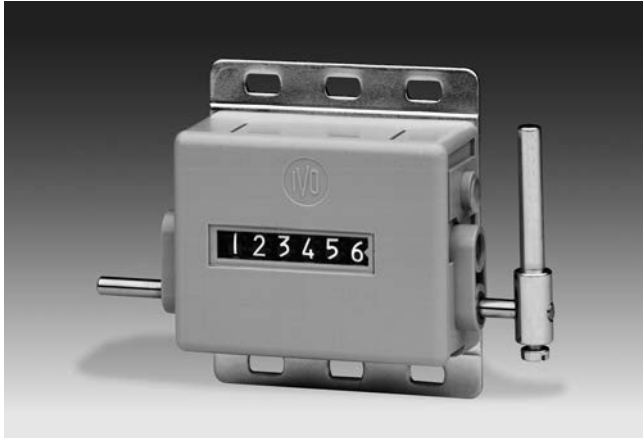


# Totalizers mechanic

## Stroke counter

Display 6-digits, reset by key

### H 300



H 300 - Stroke counter

#### Features

- Stroke counter
- Adding
- Display 6-digits
- Reset by key

#### Technical data - mechanical design

Function	Stroke counter
Display	White numbers on black
Number of digits	6-digits
Digit height	4.5 mm
Zero setting	Key reset by detachable key either at left or right shaft.
Count mode	Adding in a stroke direction to be indicated. 1 stroke = 1 count
Drive shaft	Both sides, $\varnothing 4$ mm
Stroke	$>38^\circ$ to $<60^\circ$
Stroke lever	To be positioned on shaft at will. Stroke lever relocates automatically to start position.
Stroke frequency	$\leq 500$ strokes/min
Measuring range	999 999
Ambient temperature	0...+60 °C
Housing type	Surface mount housing with mounting plate
Housing colour	Grey
Dimensions W x H x L	69 x 48 x 28 mm
Dimensions mounting plate	60 x 70 mm
Mounting type	Base plate, 6 long mounting holes
Weight approx.	130 g
Materials	Housing: Hostaform POM, grey Base plate: steel zinc-coated

# Totalizers mechanic

## Stroke counter

### Display 6-digits, reset by key

H 300

#### Part number

H 300. 010 A 01

Display / direction of stroke

- A 6-digits 999 999 / I
- B 6-digits 999 999 / II

Count mode / drive

- 01 1 stroke = 1 digit / drive shaft on both sides

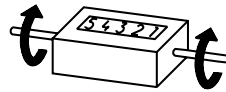
Housing

- A Surface mount housing, grey

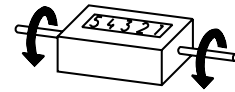
Zero setting

- 010 With detachable key

#### Direction of strokes and rotation

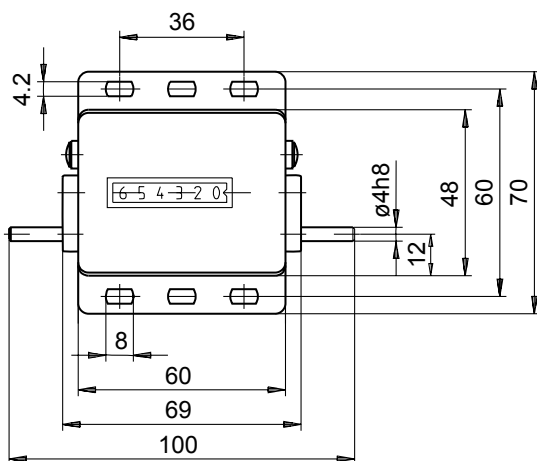


Away from user  
Direction of rotation or stroke direction I

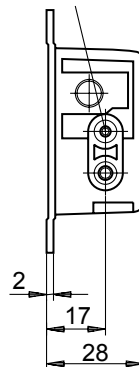


Toward user  
Direction of rotation or stroke direction II

#### Dimensions



Reset shaft for detachable key



Stroke lever and stroke

