

Totalizers mechanic

Piece counter

Display 4-digits, reset button

T 127



T 127 - Piece counter with lever

Features

- Piece counter
- Adding
- Display 4-digits
- Manual reset by knurled knob

Technical data - mechanical design

Function	Piece counter with lever
Display	White numbers on black
Number of digits	4-digits
Digit height	4.5 mm
Zero setting	Reset by knurled knob
Count mode	1 button touch = 1 count
Drive shaft	Only available with lever provided at right
Stroke	>38° to <60°
Measuring range	9999
Ambient temperature	0...+60 °C
Housing type	Surface mount housing with mounting plate
Housing colour	Grey
Dimensions W x H x L	40 x 29 x 27.5 mm
Dimensions mounting plate	40 x 46 mm
Mounting type	Base plate, 2 long mounting holes
Weight approx.	90 g
Materials	Housing: Hostaform POM, grey Base plate: steel zinc-coated

Totalizers mechanic

Piece counter

Display 4-digits, reset button

T 127

Part number

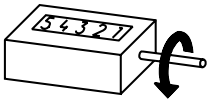
T 127. 001

Design

001 Display 4-digits 9999, stroke direction II,
Reset button left, 1 stroke = 1 digit
Housing grey, surface mount

Direction of strokes and rotation

Drive on the right



Reset button left
Toward user
Stroke direction II

Reset button always opposite of drive.

Dimensions

