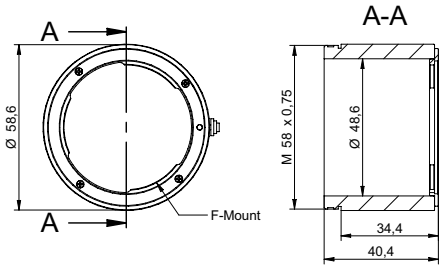


Quickstart Guide
 Lens mount options and instructions for cameras
 with M58 mount

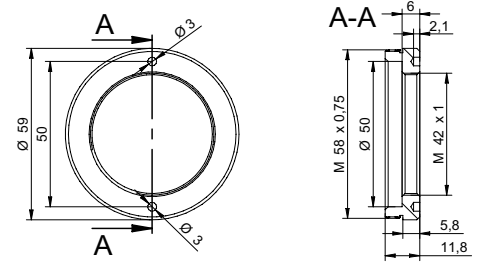
Download latest camera software:
www.baumer.com/vision/software
 Download latest technical documentation:
www.baumer.com/cameras/docs

Overview mount adapters

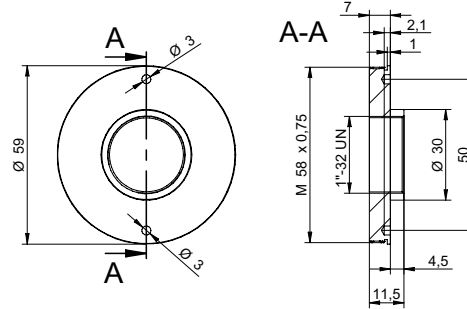
Lens mount adapter M58 to F-Mount, Art. No.: 11117852



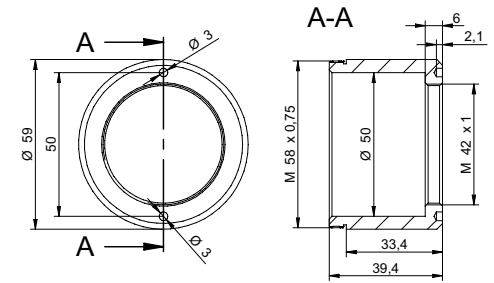
Adapter M58 / M42-Mount with flange focal length of 18 mm,
 Art. No.: 11209260



Lens mount adapter M58 to C-Mount, Art. No.: 11115198



Lens mount adapter M58 to M42x1-Mount with flange focal length of 45.5 mm,
 Art. No.: 11137781



Conformity



We declare, under our sole responsibility, that the previously described Baumer lens mount adapters conform with the directives of the CE.

Safety precautions

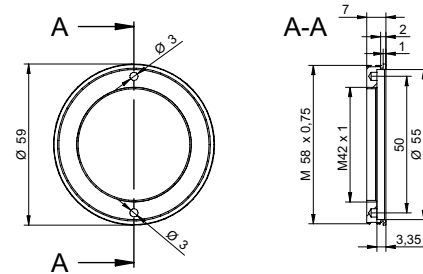
Notice

Ensure the sensor and lens are not contaminated with dust and airborne particles when mounting the support or the lens to the device!

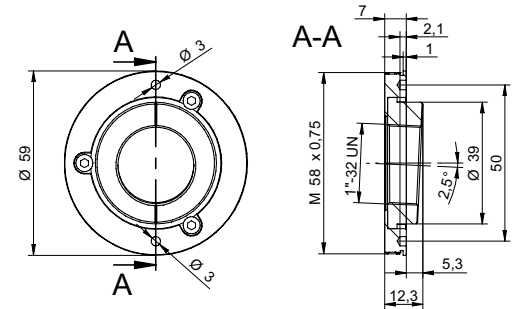
The following points are very important:

- Install the camera in an environment that is as dust free as possible!
- Keep the dust cover (bag) on the camera for as long as possible!
- Hold the camera with the sensor downwards if the sensor is uncovered.
- Avoid contact with any of the camera's optical surfaces!

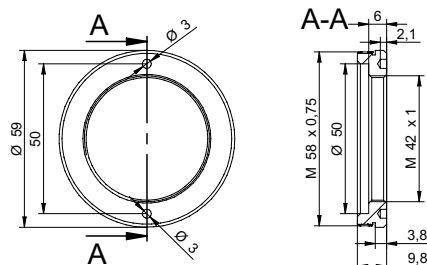
Lens mount adapter M58 to M42x1-Mount with flange focal length of 9.9 mm,
 Art. No.: 11115200



Lens mount adapter M58 to C-Mount (Scheimpflug 2.5°), Art. No.: 11165019



Lens mount adapter M58 / M42-Mount with flange focal length 16.0 mm,
 Art. No.: 11204598



Caution

Do not use grub screws to lock an M58 lens directly to the camera. These can damage the threads of the lens! The grub screws are used only to lock the lens mount adapters.

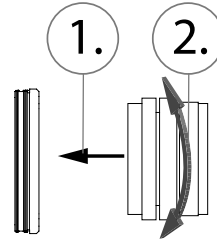
Further Information

For further information on our products visit www.baumer.com
 For technical issues, please contact our technical support:
support_cameras@baumer.com · Phone +49 (0)3528 4386-0 · Fax +49 (0)3528 4386-86
 © Baumer Optronic GmbH · Badstrasse 30 · DE-01454 Radeberg, Germany

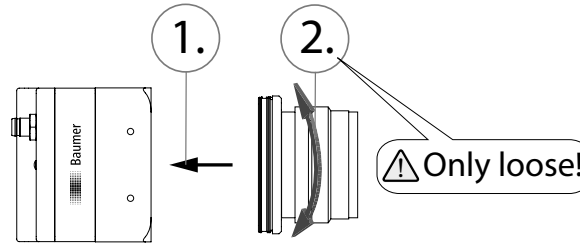
Technical data has been fully checked, but accuracy of printed matter not guaranteed.

Adapter	Suitable Lenses (examples)
Adapter M58 / F-Mount (Art. No.: 11117852)	<ul style="list-style-type: none"> ZVL-Rodagon-F_40mm_f5.6 (11201893) ZVL-FL-YFL3528 (11201890) ZVL-FL-YFL5028 (11014685) ZVL-LSF2528-F (11201894) ZVL-LSF3528-F (11201895) ZVL-LSF5028-F (11201896) ZVL-LSF10528-F (1120187) ZVL-LSF20035-F (11201898) <p>www.qioptiq.com/machine-vision-lenses industry.ricoh.com/en/fa_camera_lens/lens www.myutron.com</p>
Adapter M58 / C-Mount (Art. No.: 11115198)	<ul style="list-style-type: none"> Kowa LMxxHC lens series, Linos MeVis C series Ricoh Imaging FL-BCxxx-9M series Schneider Kreuznach Xensation lenses Computar Vxxx-MPY series <p>www.kowa-lenses.com www.qioptiq.com/machine-vision-lenses industry.ricoh.com/en/fa_camera_lens/lens www.schneiderkreuznach.com https://computar.com/</p>
Adapter M58 / M42-Mount 9.9 (Art. No.: 11115200)	<ul style="list-style-type: none"> Qioptiq Rodagon lenses with M42 mount Mjtron LSFxxx-S42 series <p>www.qioptiq.com/machine-vision-lenses www.myutron.com</p>
Adapter M58 / M42-Mount 16.0 (Art. No.: 11204598)	<ul style="list-style-type: none"> Opto-Engineering lenses with M42 mount <p>www.opto-e.com</p>
Adapter M58 / M42-Mount 18.0 (Art. No.: 11209260)	<ul style="list-style-type: none"> ZVL-Interlock_Compact_2.8/21_M42 (11209330) ZVL-Interlock_Compact_2.4/25_M42 (11209332) ZVL-Interlock_Compact_2/35_M42 (11209333) ZVL-Interlock_Compact_2/50_M42 (11209319) ZVL-Interlock_Compact_2.4/85_M42 (11209334) <p>https://www.zeiss.com/camera-lenses/int/automated-imaging.html</p>
Adapter M58 / M42-Mount 45.5 (Art. No.: 11137781)	<ul style="list-style-type: none"> ZEISS Interlock 2/100 <p>https://www.zeiss.com/camera-lenses/int/automated-imaging.html</p>
Adapter M58 / C-Mount (Scheimpflug 2.5°) (Art. No.: 11165019)	<ul style="list-style-type: none"> C mount lenses in applications that require a 2.5° lens angle

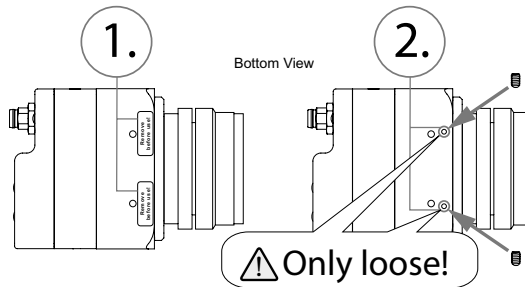
- Assemble lens mount adapter + lens (fixed).



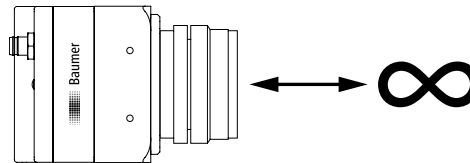
- Screw lens mount adapter + lens into camera (loose).



- Remove the stickers (1). Screw in grub screws (loose) (2).



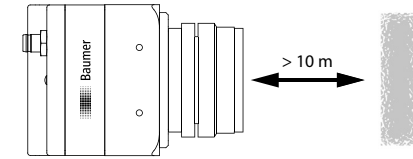
- Set lens distance to infinity.



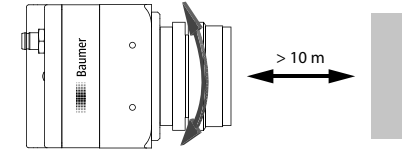
- Start live image acquisition with *Baumer Camera Explorer*.



- Point camera to far distance (> 10 m).



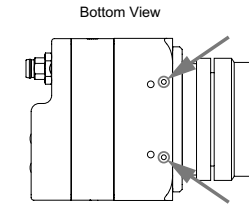
- Rotate lens until image is sharp.



Notice

If flange back is not correctly adjusted image may not be sharp.

- Fix lens mount adapter to camera with a torque of 0.1 Nm (Allen key M2).



Flange Focal Distance LX

