

# O300.DP-11199077

Distanz-Sensoren

Distance sensors

Détecteurs de mesure de distances



11199077



Baumer Electric AG · CH-8501 Frauenfeld  
Phone +41 (0)52 728 1122 · Fax +41 (0)52 728 1144

**Canada**  
Baumer Inc.  
CA-Burlington, ON L7M 4B9  
Phone +1 (1)905 335-8444

**Italy**  
Baumer Italia S.r.l.  
IT-20090 Assago, MI  
Phone +39 (0)2 45 70 60 65

**China**  
Baumer (China) Co., Ltd.  
CN-201612 Shanghai  
Phone +86 (0)21 6768 7095

**Singapore**  
Baumer (Singapore) Pte. Ltd.  
SG-339412 Singapore  
Phone +65 6396 4131

**Denmark**  
Baumer A/S  
DK-8210 Aarhus V  
Phone +45 (0)8931 7611

**Sweden**  
Baumer A/S  
SE-56133 Huskvarna  
Phone +46 (0)36 13 94 30

**France**  
Baumer SAS  
FR-74250 Fillinges  
Phone +33 (0)450 392 466

**Switzerland**  
Baumer Electric AG  
CH-8501 Frauenfeld  
Phone +41 (0)52 728 1313

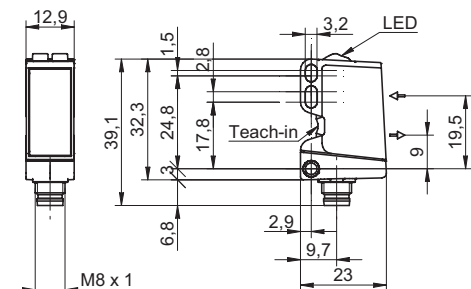
**Germany**  
Baumer GmbH  
DE-61169 Friedberg  
Phone +49 (0)6031 60 07 0

**United Kingdom**  
Baumer Ltd.  
GB-Watchfield, Swindon, SN6 8TZ  
Phone +44 (0)1793 783 839

**India**  
Baumer India Private Limited  
IN-411038 Pune  
Phone +91 20 2528 6833/34

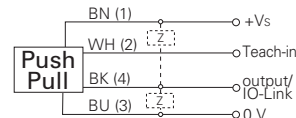
**USA**  
Baumer Ltd.  
US-Southington, CT 06489  
Phone +1 (1)860 621-2121

## Abmessungen Dimensions Dimensions

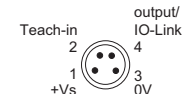


- Alle Maße in mm
- All dimensions in mm
- Toutes les dimensions en mm

## Elektrischer Anschluss Connection diagram Schéma de raccordement



BN = Braun/brown/brun  
WH = Weiss/white/blanc  
BK = Schwarz/black/noir  
BU = Blau/blue/bleu



<sup>1)</sup> Class 2, UL 1310, see FAQ

- Vor dem Anschliessen des Sensors die Anlage spannungsfrei schalten.
- Disconnect power before connecting the sensor.
- Mettre l'installation hors tension avant le raccordement du détecteur.

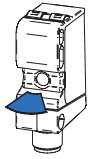
### Technische Daten

### Technical data

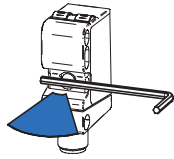
### Données techniques

Messdistanz Sd	30 ... 300 mm	measuring distance Sd	30 ... 300 mm	Distance de mesure Sd	30 ... 300 mm
Strahlform	Punkt	beam type	point	Forme du faisceau	point
Ausrichtung optische Achse	< 2°	alignment optical axis	< 2°	Axe d'alignement optique	< 2°
Betriebsspannungsreich +Vs <sup>1)</sup>	10 ... 30 VDC	voltage supply range +Vs <sup>1)</sup>	10 ... 30 VDC	Plage de tension +Vs <sup>1)</sup>	10 ... 30 VDC
Stromaufnahme max. (ohne Last)	45 mA	current consumption max. (no load)	45 mA	Consommation max. (sans charge)	45 mA
Spannungsabfall Vd	< 3 VDC	voltage drop Vd	< 3 VDC	Tension résiduelle Vd	< 3 VDC
verpolungsfest	ja	reverse polarity protection	yes	Protégé contre inversion polarité	oui
kurzschlussfest	ja	short circuit protection	yes	Protégé contre courts-circuits	oui
Schnittstelle	IO-Link V1.1	interface	IO-Link V1.1	Interface	IO-Link V1.1
Arbeitstemperatur	-25 ... +60 °C	operating temperature	-25 ... +60 °C	Température de fonctionnement	-25 ... +60 °C
Schutzart	IP 67	protection class	IP 67	Classe de protection	IP 67

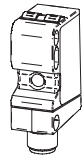
### qTeach Status



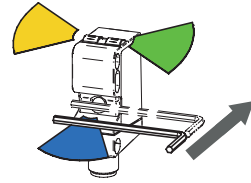
Bereit  
Ready  
Prêt



Werkzeug erkannt  
Tool detected  
Outil reconnu



qTeach OFF



Kurzes antippen  
Tap shortly  
Touche brièvement

### Allgemeine Hinweise (siehe FAQ)

- qTeach verriegelt 5 min nach dem Einschalten.
- Im Teachmodus wechselt der Ausgang in den nichtgeschalteten Zustand.
- Im Normalbetrieb muss die Teachleitung auf 0 V gelegt werden.
- Für externes Teach-in, Teachleitung entsprechend mit Vs+ verbinden.
- Beim 2-Punkt Teach-in wird die Funktion Hell-/Dunkel schaltend durch die Reihenfolge des Einlernens bestimmt.

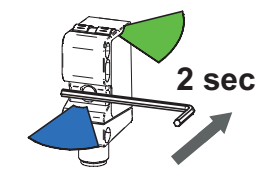
### General information (see FAQ)

- qTeach locks 5 min after switching-on.
- In teach mode the output changes to the non-switched state.
- In normal mode the teach wire is set to 0 V.
- For external teach-in, connect teach wire correspondingly to Vs+.
- During 2-point teach-in the light-/dark switching function is determined by the teach-in order.

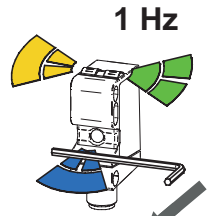
### Remarques générales (consultez FAQ)

- qTeach se verrouille 5 min après l'enclenchement.
- En mode Teach, la sortie dans l'état non commutée.
- En fonctionnement normal, la connexion Teach doit être placée sur 0 V.
- Pour le Teach-in externe, raccorder en conséquence la connexion sur Vs+.
- Teach à 2 points, la fonction de commutation claire/sombre est déterminée par l'ordre d'apprentissage.

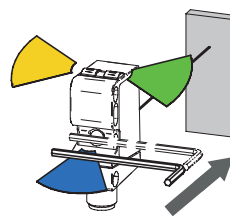
### 1-Punkt Teach 1-point teach Teach à 1 point



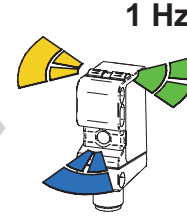
Werkzeug erkannt, LED heller  
Tool detected, LED brighter  
Outil reconnu, LED plus lumineuse



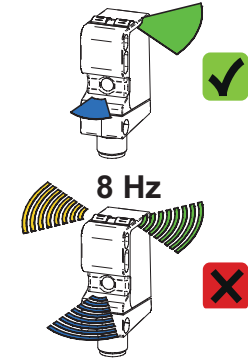
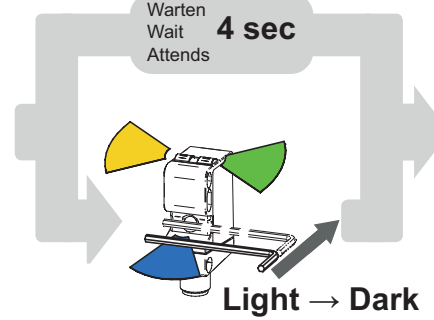
LEDs blinken  
Flashing LEDs  
Clignotement LEDs



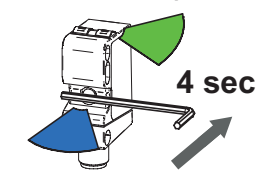
Objekt platzieren, kurz antippen  
Place object, tap shortly  
Positionnez l'objet, touchez rapidement



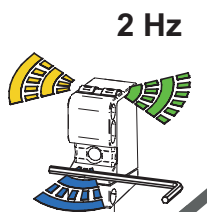
LEDs blinken  
Flashing LEDs  
Clignotement LEDs



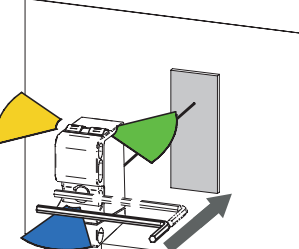
### 2-Punkt Teach 2-point teach Teach à 2 point



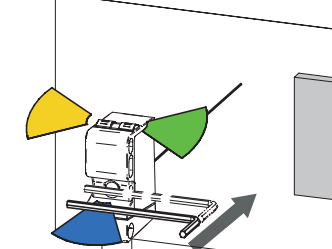
Werkzeug erkannt, LED heller  
Tool detected, LED brighter  
Outil reconnu, LED plus lumineuse



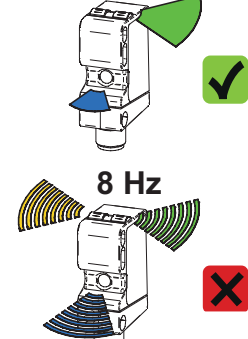
LEDs blinken  
Flashing LEDs  
Clignotement LEDs



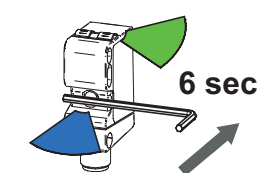
Objekt platzieren, kurz antippen  
Place object, tap shortly  
Positionnez l'objet, touchez rapidement



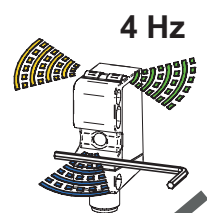
Hintergrund platzieren, kurz antippen  
Place background, tap shortly  
Positionnement d'arrière-plan, touchez rapidement



### Werkseinstellung Factory reset Remise à l'état initial



Werkzeug erkannt, LED heller  
Tool detected, LED brighter  
Outil reconnu, LED plus lumineuse



LEDs blinken  
Flashing LEDs  
Clignotement LEDs

