

Accessories

Mounting accessories

Torque support by rubber buffer element



Features

- Easy and cost-effective mounting
- For applications with high acceleration

Description

Push encoder onto drive shaft. Insert torque pin that is radially fixed at the encoder flange into the torque support (provided by customer).

Part number

10139345 Torque support by rubber buffer for encoders with 15 mm pin (Z 119.041)

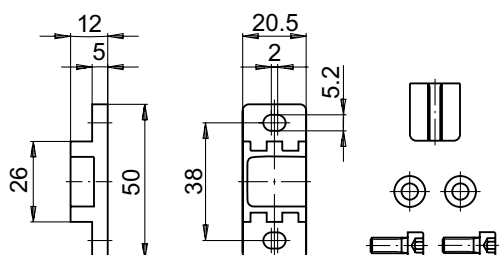
Scope of delivery

Included: torque support, rubber buffer, 2 screws M5 x 12 with two stay washers

Suitable for

EAL580-B, EAL580-T, G0333, G0A2H, G0AMH, G0M2H, G0MMH, G0P5H, G110H, G110S, G1M2H, G1MMH, G2MMH, GBA2S, GBAMH, GBAMS, GBMMH, GBMMS, GBP5H, GBP5S, GE333, GEMMH, GI330, GI331, GI332, GI333, GXA2S, GXAMS, GXM2S, GXM7S, GXMMS, GXN1H, GXP1H, GXP5S

Dimensions



Assembly drawing

