

Overview

- SmartReflect - Safe barrier principle without reflector
- Distance measurement value via IO-Link
- Manipulation-proof, simple teach-in via qTeach or line teach
- Extended parameterization options and additional diagnostic data
- Longest distances thanks to time of flight principle
- Laser performance for an accurate switching behavior
- Compact, miniaturized housing format



Picture similar



Technical data

General data

Type	Light barrier
Version	Time of Flight
Light source	Pulsed red laser diode
Sensing distance Tw	400 mm ... 1800 mm
Scanning range Sa	85% ... 80% Sde
Temperature drift	± 15 mm
Linearity error	± 10 mm
Power on indication	LED green
Output indicator	LED yellow
Sensing distance adjustment	Teach-in and IO-Link
Laser class	1
Distance to focus	700 mm
Wave length	680 nm
Suppression of reciprocal influence	Yes
Beam type	Point
Alignment optical axis	< 2°

Electrical data

Response time / release time	< 4 ms (High Speed Mode) < 8 ms (Standard Mode) < 50 ms (Long Range Mode)
Voltage supply range +Vs	12 ... 30 VDC
Current consumption max. (no load)	60 mA
Voltage drop Vd	< 2 VDC
Output function	Dark operate, switchable
Output circuit	Push-pull / IO-Link
Output current	< 50 mA
Short circuit protection	Yes

Electrical data

Reverse polarity protection	Yes
-----------------------------	-----

Communication interface

Interface	IO-Link V1.1.3
Profile	DMSS
IO-Link port type	Class A
Baud rate	230,4 kBaud (COM 3)
Cycle time	≥ 2 ms
Process data length	32 Bit
Process data structure	Bit 0 = SSC1 (distance) Bit 1 = SSC2 (distance) Bit 2 = quality Bit 3 = alarm Bit 5 = SSC4 (counter) Bit 8-15 = scale factor Bit 16-31 = 16 Bit measurement

Adjustable parameters

Switching point	Switching hysteresis
Operation mode	Time filters
LED status indicators	Output logic
Output circuit	Counter
Deactivate the sensor element	Find Me function
Teach-in mode	

Additional data

Distance	Excess gain
Operating cycles	Operating hours
Boot cycles	Operating voltage
Device temperature	Histograms

Technical data

Mechanical data

Width / diameter	12.9 mm
Height / length	32.3 mm
Depth	23 mm
Type	Rectangular
Housing material	Plastic (ASA, PMMA)
Front (optics)	PMMA
Connection types	Cable 4 pin, 2 m

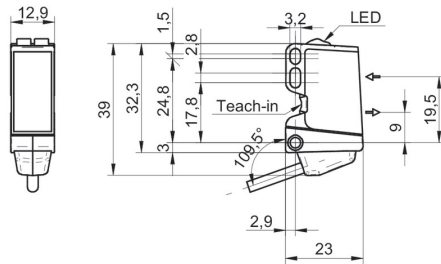
Ambient conditions

Protection class	IP 67
Operating temperature	-20 ... +50 °C
Storage temperature	-40 ... +70 °C
Vibration (sinusoidal)	IEC 60068-2-6:2008 10 g at f = 10 - 2000 Hz, duration 150 min per axis
Shock (semi-sinusoidal)	IEC 60068-2-27:2009 50 g / 11 ms, 10 impulses per axis and direction

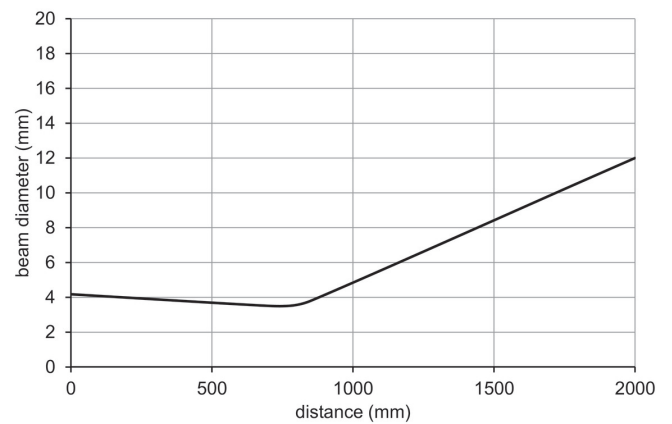
Remarks

- Measurement on 90% remission (white)

Dimension drawing



Beam characteristic (typically)

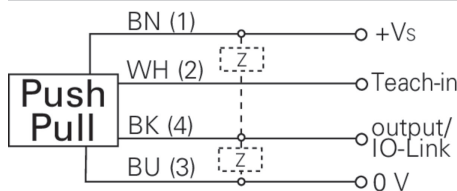


Laser warning

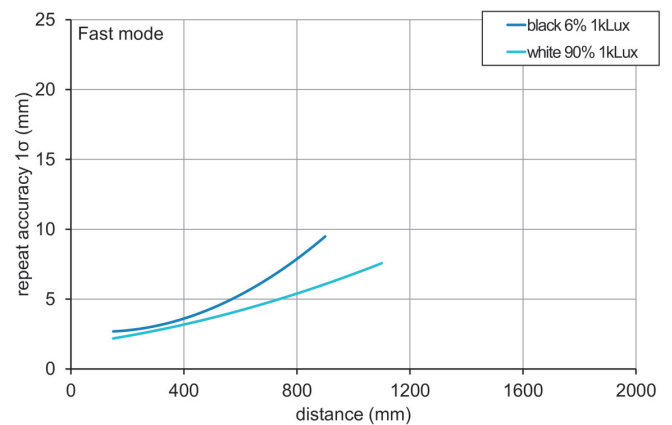
**CLASS 1 LASER
PRODUCT**

IEC 60825-1/2014
Complies with 21 CFR 1040.10 and 1040.11 except for conformance with IEC 60825-1 Ed. 3., as described in Laser Notice No. 56, dated May 8, 2019

Connection diagram



Repeat accuracy



Repeat accuracy

