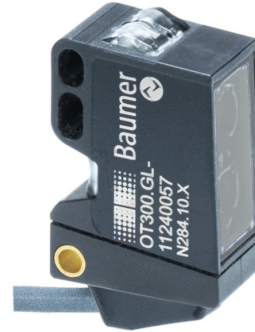


Overview

- Reliable also on very dark and shiny objects
- Manipulation-proof, simple teach-in via qTeach
- Longest distances thanks to time of flight principle
- Laser performance for an accurate switching behavior
- Compact, miniaturized housing format



Picture similar



Technical data

General data

Type	Background suppression
Version	Time of Flight
Sensing distance Tw	100 ... 1800 mm
Sensing range Tb	70 ... 1890 mm
Repeat accuracy	≤ 1400 ... 5500 μm
Temperature drift	± 15 mm
Power on indication	LED green
Output indicator	LED yellow
Sensing distance adjustment	qTeach
Distance to focus	700 mm
Suppression of reciprocal influence	Yes
Beam type	Point
Alignment optical axis	< 2°

Light Source

Light source	Pulsed red laser diode
Laser class	1
Wave length	680 nm

Electrical data

Response time / release time	< 8 ms
Voltage supply range +Vs	12 ... 30 VDC
Current consumption max. (no load)	60 mA

Electrical data

Voltage drop Vd	<2 VDC
Output function	Light operate, complementary
Output circuit	NPN
Output current	50 mA, sum of all outputs
Short circuit protection	Yes
Reverse polarity protection	Yes

Mechanical data

Width / diameter	12.9 mm
Height / length	32.3 mm
Depth	23 mm
Design	Rectangular
Housing material	Plastic (ASA, PMMA)
Front (optics)	PMMA
Connection types	Cable 4 pin, 2 m

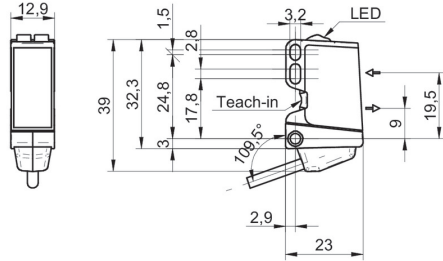
Ambient conditions

Protection class	IP 67
Operating temperature	-20 ... +50 °C
Storage temperature	-40 ... +70 °C
Vibration (sinusoidal)	IEC 60068-2-6:2008 10 g at f = 10 - 2000 Hz, duration 150 min per axis
Shock (semi-sinusoidal)	IEC 60068-2-27:2009 50 g / 11 ms, 10 impulses per axis and direction

Remarks

- Measurement on 90% remission (white)

Dimension drawing



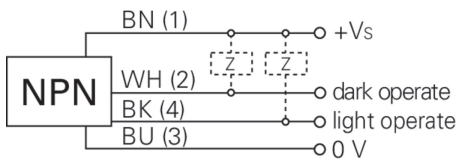
Laser warning



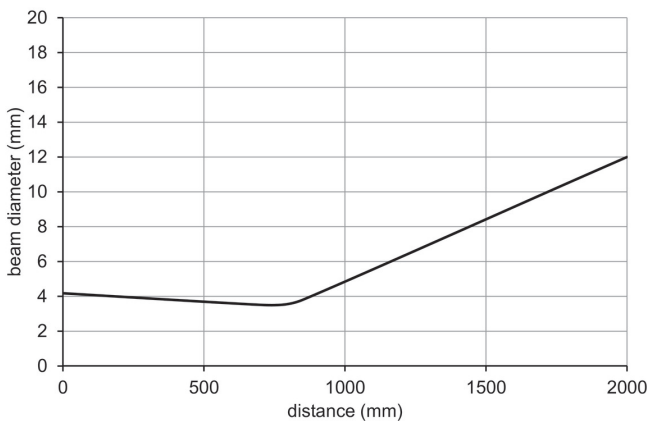
IEC 60825-1/2014

Complies with 21 CFR 1040.10 and 1040.11 except for conformance with IEC 60825-1 Ed. 3., as described in Laser Notice No. 56, dated May 8, 2019

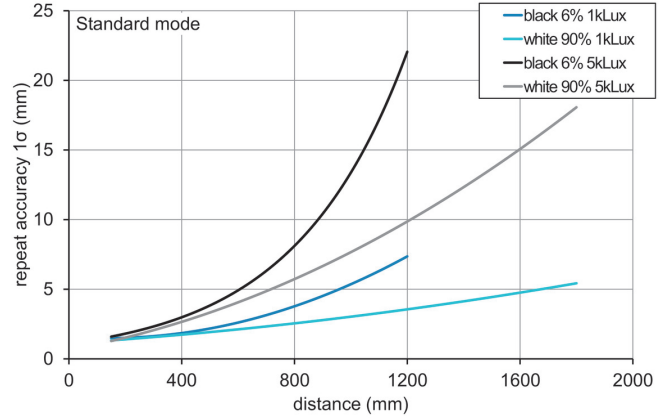
Connection diagram



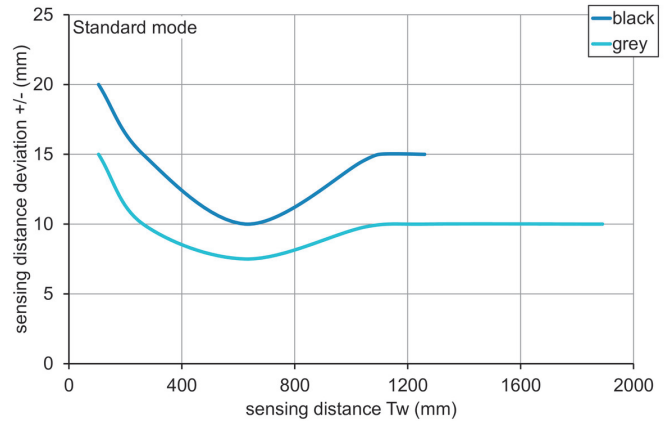
Beam characteristic (typically)



Repeat accuracy



Sensing distance diagram



Hysteresis curve

