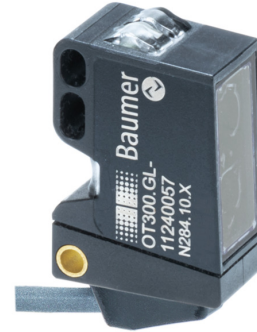


**Overview**

- Distance measurement up to 10 meters with reflector via analog output
- Reliable also on very dark and shiny objects
- Manipulation-proof, simple teach-in via qTeach or line teach
- Longest distances thanks to time of flight principle
- Compact, miniaturized housing



Picture similar



**Technical data**

**General data**

Type	Distance measuring
Version	Time of Flight
Measuring distance Sd	100 ... 10000 mm
Measuring range Mr	9900 mm
Focal distance	700 mm
Adjustment	qTeach / external
Power on indication	LED green
Output indicator	LED yellow
Repeat accuracy	≤ 2800 ... 11000 µm
Linearity error	± 20 mm
Beam type	Point
Suppression of reciprocal influence	Yes
Alignment optical axis	< 2°
Temperature drift	± 30mm

**Light Source**

Light source	Pulsed red laser diode
Wave length	680 nm
Laser class	1

**Electrical data**

Response time / release time	< 8 ms
Voltage supply range +Vs	12 ... 30 VDC

**Electrical data**

Current consumption max. (no load)	60 mA
Output circuit	Analog 0 ... 10 VDC
Short circuit protection	Yes
Reverse polarity protection	Yes, Vs to GND

**Mechanical data**

Width / diameter	12.9 mm
Height / length	32.3 mm
Depth	23 mm
Design	Rectangular
Housing material	Plastic (ASA, PMMA)
Front (optics)	PMMA
Connection types	Cable 4 pin, 2 m

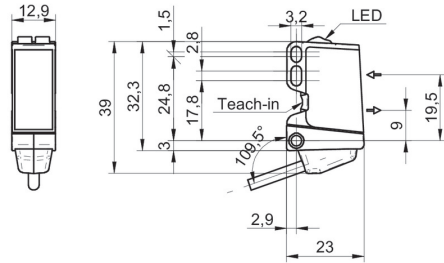
**Ambient conditions**

Protection class	IP 67
Operating temperature	-20 ... +50 °C
Storage temperature	-40 ... +70 °C
Vibration (sinusoidal)	IEC 60068-2-6:2008 10 g at f = 10 - 2000 Hz, duration 150 min per axis
Shock (semi-sinusoidal)	IEC 60068-2-27:2009 50 g / 11 ms, 10 impulses per axis and direction

**Remarks**

- Measurement on reflector Z-FTDF 050I0000

**Dimension drawing**



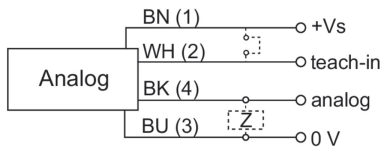
**Laser warning**

**CLASS 1 LASER  
PRODUCT**

IEC 60825-1/2014

Complies with 21 CFR 1040.10 and 1040.11 except for conformance with IEC 60825-1 Ed. 3., as described in Laser Notice No. 56, dated May 8, 2019

**Connection diagram**



**Accessories**

**Mounting accessories**

11104963	Sensofix O300/U300
11102423	Mounting bracket O300/U300 (L design)
11124807	Mounting bracket O300 - Retrofit for sensors series 20
11707685	Mounting rod with mounting plate holder 200 mm
11707686	Mounting rod with mounting plate holder 300 mm
11707688	Mounting rod 200 mm
11707697	Mounting rod 250 mm
11707698	Mounting rod with mounting plate holder 250 mm
11707687	Mounting rod 300 mm
11707701	Mounting plate series 300 and ø12 mm
11707702	Mounting base
11707703	Two-way connector