

O300W.GP-GW1J.PVN

Diffuse sensors with background suppression - washdown

Article number: 11127755

Overview

- background suppression
- 30 ... 200 mm
- pulsed PinPoint LED
- push-pull
- Teach-in and IO-Link
- connector M8 4 pin
- -25 ... 60 °C
- IP 68/69K & proTect+



Picture similar



Technical data

General data

| | |
|-------------------------------------|------------------------|
| Type | Background suppression |
| Special type | Washdown design |
| Light source | Pulsed PinPoint LED |
| Sensing distance Tw | 30 ... 200 mm |
| Sensing range Tb | 15 ... 200 mm |
| Power on indication | LED green |
| Light indicator | LED yellow |
| Sensing distance adjustment | Teach-in and IO-Link |
| Wave length | 630 nm |
| Suppression of reciprocal influence | Yes |
| Alignment optical axis | < 2° |
| Approvals/certificates | Ecolab |

Electrical data

| | |
|------------------------------------|---------------|
| Response time / release time | < 0,49 ms |
| Voltage supply range +Vs | 10 ... 30 VDC |
| Current consumption max. (no load) | 45 mA |

Electrical data

| | |
|-----------------------------|----------------------|
| Current consumption typ. | 30 mA |
| Voltage drop Vd | < 3 VDC |
| Output function | Light / dark operate |
| Output circuit | Push-pull |
| Output current | < 100 mA |
| Short circuit protection | Yes |
| Reverse polarity protection | Yes |

Mechanical data

| | |
|------------------|------------------------------|
| Width / diameter | 16,5 mm |
| Height / length | 34,7 mm |
| Depth | 28,2 mm |
| Type | Rectangular |
| Housing material | Stainless steel 1.4404 (V4A) |
| Front (optics) | PMMA |
| Connection types | Connector M8 4 pin |

Ambient conditions

| | |
|-----------------------|----------------------|
| Protection class | IP 68/69K & proTect+ |
| Operating temperature | -25 ... +60 °C |

Remarks

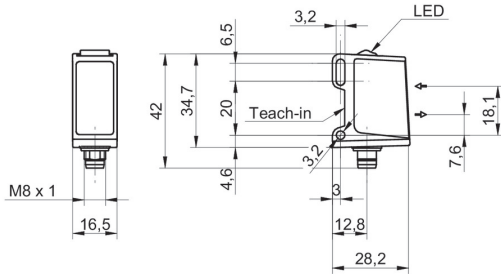
- qTeach
- IO-Link: V1.1, filter functions, qTeach lock adjustable

O300W.GP-GW1J.PVN

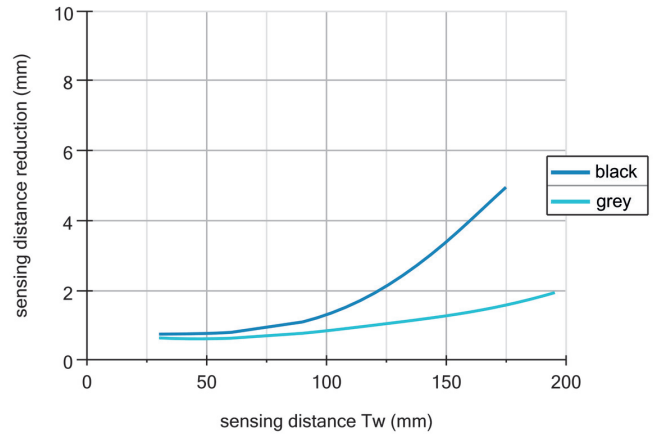
Diffuse sensors with background suppression - washdown

Article number: 11127755

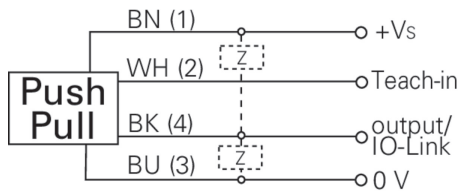
Dimension drawing



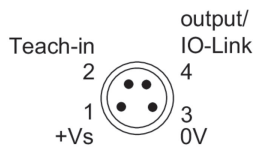
Sensing distance diagram



Connection diagram



Pin assignment



Beam characteristic (typically)

