

## O300.SP.T-GW1J.72N

SmartReflect Light barriers - transparent detection

Article number: 11136906

### overview

- light barrier
- 30 ... 300 mm
- pulsed PinPoint LED
- push-pull
- Teach-in and IO-Link
- connector M8 4 pin
- -25 ... 60 °C
- IP 67



### technical data

#### general data

type	light barrier
version	transparency object detection
light source	pulsed PinPoint LED
background position Sde	30 ... 300 mm
scanning range Sa	100% ... 85% Sde
minimal signal attenuation	10 % / 20 % / 30 %
power on indication	LED green
light indicator	LED yellow
sensing distance adjustment	Teach-in and IO-Link
wave length	630 nm
suppression of reciprocal influence	yes
alignment optical axis	< 2°

#### electrical data

response time / release time	0,25 ... 0,6 ms
voltage supply range +Vs	10 ... 30 VDC
current consumption max. (no load)	45 mA

#### remarks

- qTeach
- IO-Link: V1.1, filter functions, qTeach lock adjustable
- signal attenuation adjustable
- response time / release time: depending on the signal strength

current consumption typ.	30 mA
voltage drop Vd	< 3 VDC
output function	light / dark operate
output circuit	push-pull
output current	< 100 mA
short circuit protection	yes
reverse polarity protection	yes

#### mechanical data

width / diameter	12,9 mm
height / length	32,3 mm
depth	23 mm
type	rectangular
housing material	plastic (ASA, PMMA)
front (optics)	PMMA
connection types	connector M8 4 pin

#### ambient conditions

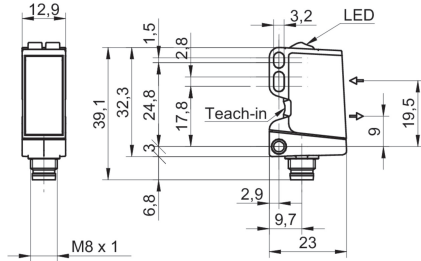
operating temperature	-25 ... +60 °C
protection class	IP 67

# O300.SP.T-GW1J.72N

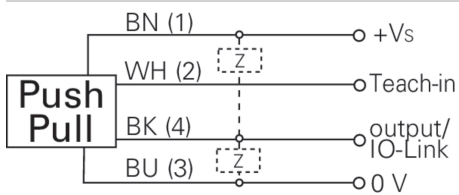
SmartReflect Light barriers - transparent detection

Article number: 11136906

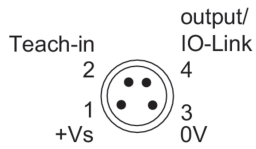
## dimension drawing



## connection diagram



## pin assignment



## beam characteristic (typically)

