

Overview

- light barrier
- 30 ... 300 mm
- pulsed PinPoint LED
- NPN complementary
- qTeach / 1-Step Teach-in
- connector M8 4 pin
- -25 ... 60 °C
- IP 67



Picture similar

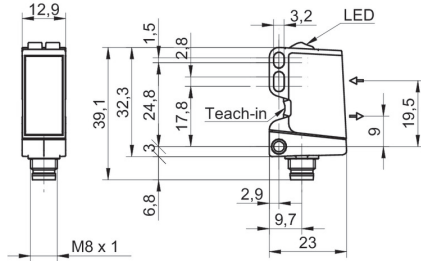


Technical data

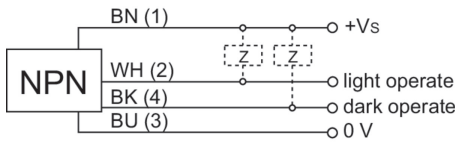
General data		Electrical data	
Type	Light barrier	Current consumption typ.	30 mA
Version	Standard object detection	Voltage drop Vd	< 3 VDC
Light source	Pulsed PinPoint LED	Output function	Light / dark operate
Background position Sde	30 ... 300 mm	Output circuit	NPN complementary
Scanning range Sa	90% ... 85% Sde	Output current	< 100 mA
Power on indication	LED green	Short circuit protection	Yes
Light indicator	LED yellow	Reverse polarity protection	Yes
Sensing distance adjustment	qTeach / 1-Step Teach-in	Mechanical data	
Wave length	630 nm	Width / diameter	12.9 mm
Suppression of reciprocal influence	Yes	Height / length	32.3 mm
Alignment optical axis	< 2°	Depth	23 mm
Electrical data		Type	Rectangular
Response time / release time	< 0.49 ms	Housing material	Plastic (ASA, PMMA)
Voltage supply range +Vs	10 ... 30 VDC	Front (optics)	PMMA
Current consumption max. (no load)	45 mA	Connection types	Connector M8 4 pin
Remarks		Ambient conditions	
▪ qTeach		Protection class	IP 67
		Operating temperature	-25 ... +60 °C

2022-11-09 The product features and technical data specified do not express or imply any warranty. Technical modifications subject to change.

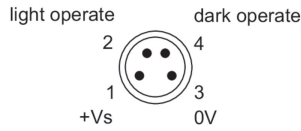
Dimension drawing



Connection diagram



Pin assignment



Beam characteristic (typically)

