

**Overview**

- background suppression
- 30 ... 300 mm
- pulsed red LED
- PNP complementary
- qTeach / 1-Step Teach-in
- connector M8 4 pin
- -25 ... 60 °C
- IP 67



Picture similar



**Technical data**

**General data**

Type	Background suppression
Light source	Pulsed red LED
Sensing distance Tw	30 ... 300 mm
Sensing range Tb	15 ... 300 mm
Power on indication	LED green
Light indicator	LED yellow
Sensing distance adjustment	qTeach / 1-Step Teach-in
Wave length	630 nm
Suppression of reciprocal influence	Yes
Alignment optical axis	< 2°

**Electrical data**

Response time / release time	< 1 ms
Voltage supply range +Vs	10 ... 30 VDC
Current consumption max. (no load)	45 mA

**Electrical data**

Current consumption typ.	30 mA
Voltage drop Vd	< 3 VDC
Output function	Light / dark operate
Output circuit	PNP complementary
Output current	< 100 mA
Short circuit protection	Yes
Reverse polarity protection	Yes

**Mechanical data**

Width / diameter	12.9 mm
Height / length	32.3 mm
Depth	23 mm
Type	Rectangular
Housing material	Plastic (ASA, PMMA)
Front (optics)	PMMA
Connection types	Connector M8 4 pin

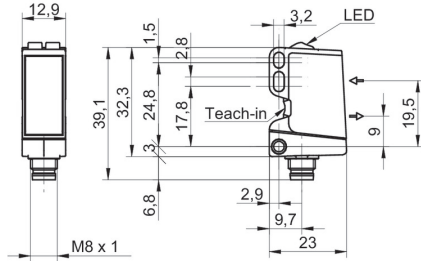
**Ambient conditions**

Protection class	IP 67
Operating temperature	-25 ... +60 °C

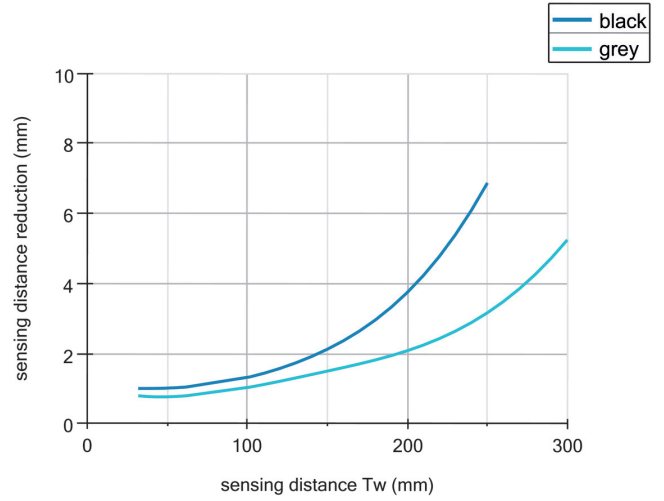
**Remarks**

- qTeach

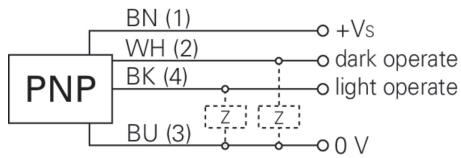
**Dimension drawing**



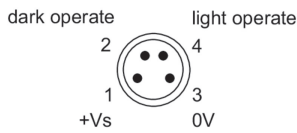
**Sensing distance diagram**



**Connection diagram**



**Pin assignment**



**Beam characteristic (typically)**

