

O200.GR-PV1Z.72CV/BX50

Diffuse sensors with background suppression - miniature

Article number: 11210541

Overview

- Outstanding reliability and unrivalled immunity against ambient light
- Reproducible and color-independent switching distances
- Fixed preset for the simplest commissioning
- Robust housing with stainless steel spacer sleeves



Picture similar



Technical data

General data

Type	Background suppression
Sensing distance T_w	50 mm
Sensing range T_b	7 ... 50 mm
Smallest object recognizable typ.	0.25 mm at 30 mm
Power on indication	LED green
Alignment / soiled lens indicator	Flashing output indicator
Output indicator	LED yellow
Sensing distance adjustment	No
Suppression of reciprocal influence	Yes
Alignment optical axis	< 1,5°

Light Source

Light source	Pulsed red LED
Wave length	644 nm

Electrical data

Response time / release time	< 1 ms
Voltage supply range +Vs	10 ... 30 VDC
Current consumption max. (no load)	20 mA (@ 30 VDC)

Electrical data

Current consumption typ.	16 mA (@ 24 VDC)
Voltage drop V_d	<2 VDC
Output function	Light / dark operate
Output circuit	PNP complementary
Output current	50 mA
Short circuit protection	Yes
Reverse polarity protection	Yes

Mechanical data

Width / diameter	8 mm
Height / length	25.1 mm
Depth	14.1 mm
Design	Rectangular
Mechanical mounting	Sleeve smooth (stainless steel)
Housing material	Plastic (ASA, PMMA)
Front (optics)	PMMA
Connection types	Cable 4 pin, 2 m
Cable characteristics	PVC / PVC 4 x 0.08 mm ²

Ambient conditions

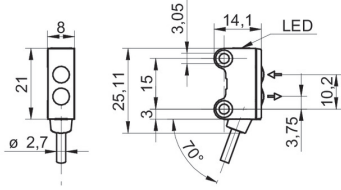
Protection class	IP 67
Operating temperature	-25 ... +50 °C

O200.GR-PV1Z.72CV/BX50

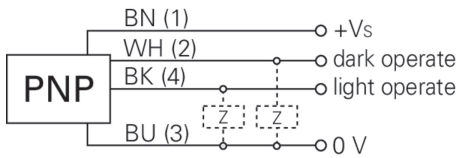
Diffuse sensors with background suppression - miniature

Article number: 11210541

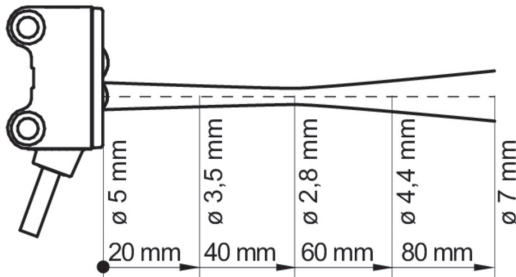
Dimension drawing



Connection diagram



Beam characteristic (typically)



Sensing distance diagram

