

# Totalizers mechanic

## Meter counter

Display 7-digits, reset by key

### M 400



M 400 - Meter counter

#### Features

- Meter counter
- Adding
- Display 7-digits
- Reset by key

#### Technical data - mechanical design

Function	Meter counter
Display	White numbers on black Decimal digits in red
Number of digits	7-digits
Digit height	7 mm
Zero setting	Key reset by detachable key either at left or right shaft.
Count mode	Adding in a rotational direction to be indicated, subtracting in reverse direction. 2 revs. = 10 counts
Drive shaft	Both sides, $\varnothing 7$ mm
Measuring speed	<100 m/min (measuring wheel)
Measuring accuracy	1 dm
Measuring range	999 999.9 m
Ambient temperature	0...+60 °C
Housing type	Surface mount housing with mounting plate
Housing colour	Grey
Dimensions W x H x L	106 x 64 x 45 mm
Dimensions mounting plate	120 x 64 mm
Mounting type	Base plate, 4 long mounting holes
Weight approx.	350 g
Materials	Housing: Hostaform POM, grey Base plate: steel zinc-coated

# Totalizers mechanic

## Meter counter

### Display 7-digits, reset by key

M 400

#### Part number

M 400.0   0 03  

#### Display / direction of rotation

- C 7-digits 999999.9 / I
- D 7-digits 999999.9 / II

#### Count mode / drive

- 03 2 revolutions = 10 digits = 1.0 m / drive shaft on both sides (for mea. wheel circumf. 50 cm)

#### Housing

- A Surface mount housing, grey
- B Surface mount housing with hinge plate

#### Count mode

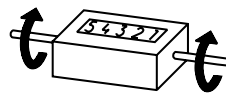
- 1 Adding in a rotational direction to be indicated, subtracting in reverse direction only first digit down to 0
- 2 Adding - subtracting

#### Accessories

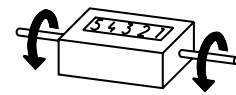
##### Measuring wheels

MR512.07A	Circumf. 50 cm, knurled aluminium
MR542.07D	Circumf. 50 cm, smooth Hytrel TPE-E
MR552.07A	Circumf. 50 cm, smooth Vulkollan PUR
MR562.07A	Circumf. 50 cm, knopped rubber NBR Nitril
MR592.07D	Circumf. 50 cm, grooved Hytrel TPE-E

##### Direction of strokes and rotation



Away from user  
Direction of rotation or stroke direction I



Towards user  
Direction of rotation or stroke direction II

#### Dimensions

