

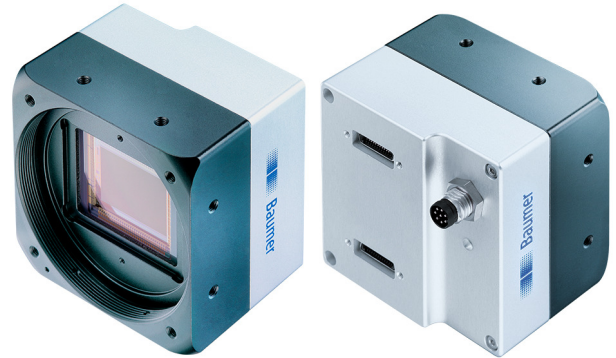
LXC-500C

Camera Link®, 48 Megapixel, Color

Article number: 11188974

Overview

- 7920 × 6004 px
- ams (CMOSIS) CMV50000
- 35 mm CMOS
- 15 fps
- Camera Link® Full



Picture similar



GEN*i*CAM



Technical data

Sensor information

Sensor	ams (CMOSIS) CMV50000
Mono/Color	Color
Color filter	RGB Bayer Mosaic
Sensor type	35 mm CMOS
Shutter type	Global shutter
Resolution	7920 × 6004 px
Pixel size	4.6 × 4.6 µm
Exposure time	0.1 ... 10000 ms

Data quality (EMVA 1288 typical)

Dark noise	8.23 e-
Saturation capacity	12734 e-
Dynamic range	63.2 dB
Signal-to-noise ratio	41 dB
Quantum efficiency	44.8 % @ 465 nm 48.8 % @ 536 nm 41.4 % @ 631 nm

Acquisition formats

Image formats, interface	Full Frame, 7920 × 6004 px, max. 15 fps frame rate max.
Pixel formats	BayerBG8 BayerBG10 BayerBG12

Image preprocessing

Analog controls	Gain (0 ... 23,5 dB) Offset (0 ... 255 LSB 12 Bit)
Color models	Raw Bayer

Image preprocessing

Color processing	NA
------------------	----

Camera features

Synchronization	free running trigger
Trigger sources	Hardware Software ActionCommand
Trigger delay	0 ... 2 sec, tracking and buffering of up to 256 trigger signals
Sequencer	Automated control for series of images using different sets of parameters
Sequencer parameter	Exposure time gain factor Output ROI Offset x ROI Offset y
Digital inputs	1 input line
Digital outputs	1 output line
Internal image buffer	512 MB

Interfaces and connectors

Data interface	Camera Link Full, connector: 2 x Standard SDR26 (Mini CL)
Process interface	M8 / 8 pins
Power supply	via M8 / 8 pins

Mechanical data

Lens mount	M58-mount (F-mount, M42, C-mount via adapter)
------------	---

LXC-500C

Camera Link®, 48 Megapixel, Color

Article number: 11188974

Technical data

Mechanical data

Width	60 mm
Height	60 mm
Depth	43.05 mm
Weight	≤ 235 g (M58-mount)
Material	housing: aluminum

Electrical data

Voltage supply range +Vs	12 ... 24 V DC (external power supply) 38 ... 57 V (PoCL)
Power consumption	Approx. 10 W @ 24 VDC (sequential readout) Approx. 10 W @ 12 VDC (PoCL)

Non-volatile memory

Flash memory size	32 Mbit
-------------------	---------

Environmental conditions

Operating temperature	+5 ... +66 °C @ T = measurement point
Humidity	10 ... 90 % (non-condensing)
Protection class	IP 40

Conformity

Conformity	CE RoHS
------------	------------

Dimension drawing

