

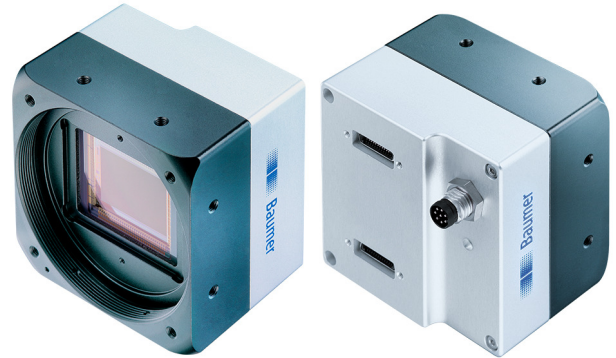
## LXC-120M

Camera Link®, 12 Megapixel, Monochrome

Article number: 11148663

### Overview

- 4096 × 3072 px
- ams (CMOSIS) CMV12000
- APS-C CMOS
- 63 fps
- Camera Link® Full



Picture similar



GEN*i*CAM



### Technical data

#### Sensor information

Sensor	ams (CMOSIS) CMV12000
Mono/Color	Mono
Sensor type	APS-C CMOS
Shutter type	Global shutter
Resolution	4096 × 3072 px
Pixel size	5.5 × 5.5 µm
Exposure time	0.02 ... 1000 ms

#### Data quality (EMVA 1288 typical)

Dark noise	12.25 e-
Saturation capacity	8931 e-
Dynamic range	56.7 dB
Signal-to-noise ratio	39.5 dB
Quantum efficiency	38.1 % @ 536 nm

#### Acquisition formats

Image formats, interface frame rate max.	Full Frame, 4096 × 3072 px, max. 63 fps Binning 2×2, 2048 × 1536 px, max. 63 fps Binning 1×2, 4096 × 1536 px, max. 63 fps Binning 2×1, 2048 × 3072 px, max. 63 fps
Pixel formats	Mono8 Mono10

#### Image preprocessing

Analog controls	Gain (0 ... 12 dB) Offset (0 ... 63 LSB 10 Bit)
Color models	Mono

#### Camera features

Synchronization	free running trigger
Trigger sources	Hardware Software ActionCommand
Trigger delay	0 ... 2 sec, tracking and buffering of up to 256 trigger signals
Sequencer	Automated control for series of images using different sets of parameters
Sequencer parameter	Exposure time gain factor Output ROI Offset x ROI Offset y
Digital inputs	1 input line
Digital outputs	1 output line
Internal image buffer	512 MB

#### Interfaces and connectors

Data interface	Camera Link Full, connector: 2 x Standard SDR26 (Mini CL)
Process interface	M8 / 8 pins
Power supply	via M8 / 8 pins

#### Mechanical data

Lens mount	M58-mount (F-mount, M42, C-mount via adapter)
Width	60 mm
Height	60 mm

# LXC-120M

Camera Link®, 12 Megapixel, Monochrome

Article number: 11148663

## Technical data

### Mechanical data

Depth	43.05 mm
Weight	≤ 235 g (M58-mount)
Material	housing: aluminum

### Electrical data

Voltage supply range +Vs	12 ... 24 V DC (external power supply) 38 ... 57 V (PoCL)
Power consumption	Approx. 6.5 W @ 24 VDC Approx. 6.5 W @ 12 VDC (PoCL)

### Non-volatile memory

Flash memory size	128 kB
-------------------	--------

### Environmental conditions

Operating temperature	+5 ... +65 °C @ T = measurement point
Humidity	10 ... 90 % (non-condensing)

Protection class	IP 40
------------------	-------

### Conformity

Conformity	CE RoHS EAC
------------	-------------------

## Dimension drawing

