

FHDK 10P5150/S35A

Diffuse sensors with background suppression - miniature

Article number: 10162949

Overview

- background suppression
- 20 ... 80 mm
- pulsed red LED
- PNP
- mechanical, 5 turn
- connector M8 4 pin
- -25 ... 65 °C
- IP 67



Picture similar



Technical data

General data

Type	Background suppression
Version	Line beam
Light source	Pulsed red LED
Sensing distance T_w	20 ... 80 mm
Sensing range T_b (at T_w max.)	5 ... 80 mm
Sensing range T_b (at T_w min.)	5 ... 20 mm
Alignment / soiled lens indicator	Flashing light indicator
Light indicator	LED yellow
Sensing distance adjustment	Mechanical, 5 turn
Wave length	660 nm
Suppression of reciprocal influence	Yes

Electrical data

Response time / release time	< 1 ms
Voltage supply range +Vs	10 ... 30 VDC

Electrical data

Current consumption max. (no load)	30 mA
Current consumption typ.	20 mA
Voltage drop V_d	< 1.8 VDC
Output function	Light / dark operate
Output circuit	PNP
Output current	< 100 mA
Short circuit protection	Yes
Reverse polarity protection	Yes

Mechanical data

Width / diameter	10.4 mm
Height / length	27 mm
Depth	14 mm
Type	Rectangular
Housing material	Plastic (ASA)
Front (optics)	PMMA
Connection types	Connector M8 4 pin

Ambient conditions

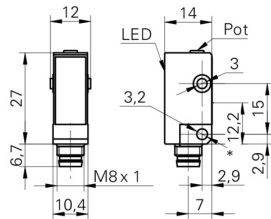
Protection class	IP 67
Operating temperature	-25 ... +65 °C

FHDK 10P5150/S35A

Diffuse sensors with background suppression - miniature

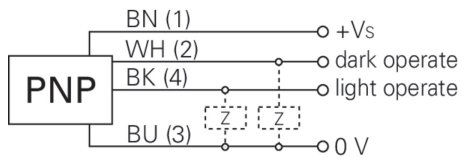
Article number: 10162949

Dimension drawing



- * emitter axis

Connection diagram



Beam characteristic (typically)

