

Coupling CPS25 (L=19, D1=11 / D2=06)

For encoder with solid shaft

Article number: 11065926

Overview

- Precision coupling
- Torsionally stiff coupling with low installation depth
- Pluggable
- Electrically insulating center disk
- Suitable for very high speeds



Technical data

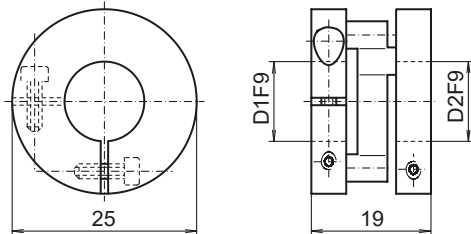
Technical data

Shaft diameter D1	11 mm
Shaft diameter D2	6 mm
Operating speed	≤13500 rpm
Operating temperature	-30...+80 °C
Moment of inertia	≤ 20 gcm ²
Maximum torque	100 Ncm

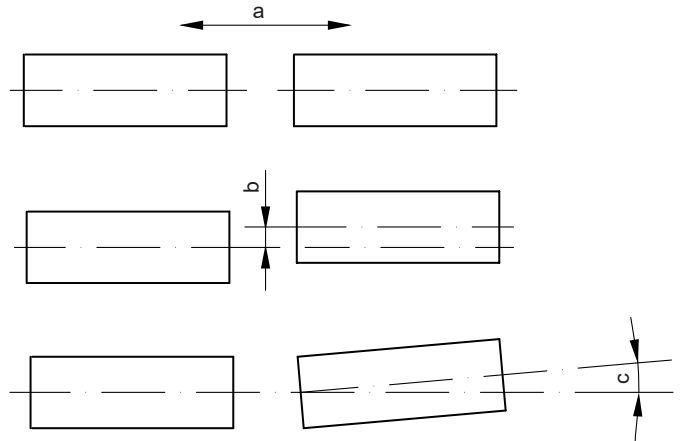
Technical data

Admissible parallel misalignment	≤ 0.5 mm
Admissible angular error	≤ 1 °
Weight approx.	18 g
Mechanical mounting	Clamping hub
Material	Hub: aluminium Centre disc: plastic

Dimensions



Assembly drawing



a = Admissible axial movement
b = Admissible parallel misalignment
c = Admissible angular error